

NHS

*National Institute for
Health Research*

Funding opportunities
for research and career development



**funding leading edge research and
supporting research professionals**

Contents

Introduction	3
---------------------	----------

Research programmes	5
----------------------------	----------

Efficacy and Mechanism Evaluation (EME)	6
Health Services and Delivery Research (HS&DR)	7
Health Technology Assessment (HTA)	8
Invention for Innovation (i4i)	9
Programme Grants for Applied Research (PGfAR)	10
Programme Development Grants (PDG)	10
Public Health Research (PHR)	11
Research for Patient Benefit (RfPB)	12
Systematic Reviews (SR)	13

Funding information	14
----------------------------	-----------

Research funded by the research programmes	14
Plain English summaries	15
Types of research funded	15
Who can apply	16
Calls/Competitions, funding amounts and periods	16

Career development and support	17
---------------------------------------	-----------

Research training programmes	17
Fellowships Programme	17
Integrated Academic Training Programme	18
Research Methods Programme	19
HEE/NIHR Integrated Clinical Academic (ICA) Programme	20
Research Professorships	20
Knowledge Mobilisation Research Fellowships	21
Clinical Trial Fellowships	21
School for Primary Care Research Fellowships	22
Leadership Support and Development Programme	22

Research career pathway chart	24
--------------------------------------	-----------

Support for researchers	26
--------------------------------	-----------

Research Design Service (RDS)	26
Patient and public involvement	27
Journals Library	27
Dissemination Centre	27

Introduction

The goal of the National Institute for Health Research (NIHR) is to create a health research system in which the NHS supports outstanding individuals, working in world class facilities, conducting leading edge research focused on the needs of patients and the public.

The NIHR commissions and funds health, public health and social care research that is essential for improving the health and wealth of the nation. A key objective is to improve the quality, relevance and focus of the research we commission by distributing funds in a transparent and accountable way through open competition and peer review.

The NIHR also funds career development for researchers whose work focuses on people and patient-based applied health research.

This booklet provides information about the NIHR's research funding and career development opportunities available for researchers based in the NHS, universities, industry and other organisations concerned with health, public health and social care.



Professor Dame
Sally C. Davies FRS

Chief Medical Officer and
Chief Scientific Adviser,
Department of Health

The NIHR is committed to adding value in research to maximise the potential impact of the research that it funds for patients and the public. This means ensuring that it answers the right questions, delivers the research efficiently and publishes the results in full in an accessible and unbiased report.



Research programmes

The NIHR funds a range of research programmes to produce evidence that enables professionals, policy makers and patients to make informed decisions about healthcare and provide the means to turn new interventions into better care.

Research applications are rigorously evaluated by independent peer review to ensure that only the most outstanding proposals are funded. Join our pool of reviewers at www.nihr.ac.uk/become-a-reviewer to share your expertise and gain an insight into the standards of NIHR applications.

Calls are issued for commissioned research which addresses specific topic areas, and researcher-led research which funds questions proposed directly by researchers. In order to meet an identified health challenge or government priority, the NIHR will issue a themed call. These will be promoted in advance whenever possible and clearly advertised on NIHR sites. All research programmes, including NIHR Fellowships, will participate in the themed call as far as their remit allows. Previous NIHR-wide themed calls have focused on topics such as dementia, surgery and primary care interventions.

More closely defined themed calls may be issued by individual programmes when an area of uncertainty is identified, sometimes arising from a specific event. The Health Services and Delivery Research themed call in connection with the Francis Enquiry is one such example.

The application process can vary between programmes. For some programmes a full application is required in a one-stage process. Other programmes request that outline proposals are submitted and if applicants are successful, they are invited to complete a full application in a two-stage process.

The funding information on pages 14 to 16 provides details about types of studies funded, eligibility, competitions and funding amount and period for each programme.

An RSS feed for the latest calls for proposals can be found on the NIHR's website at www.nihr.ac.uk. Information about previously funded projects is also available.

Efficacy and Mechanism Evaluation (EME)

The EME Programme bridges the gap between preclinical studies and evidence of clinical efficacy. The aim is to secure the progress of new technologies and interventions through early clinical trials and onto larger, later clinical trials. The EME Programme supports excellent clinical science with an ultimate view to improving health or patient care.

The programme supports clinical trials and evaluative studies in patients which evaluate clinical efficacy of interventions where proof of concept in humans has already been achieved, add significantly to our understanding of biological or behavioural mechanisms and processes, or explore new scientific or clinical principles; and include the development or testing of new methodologies.

There are two workstreams, researcher-led and commissioned. Both workstreams fund large projects with clear stages and milestones. Proposals may include pilot and feasibility studies and late development of technologies. The programme welcomes collaborations with industry and charities.

The EME Programme is a partnership between the Medical Research Council (MRC) and the NIHR. Researchers in England, Northern Ireland, Scotland and Wales are eligible to apply.

Calls/competitions	Researcher-led and commissioned calls
Application process	Typically two-stage
Alerts	www.nets.nihr.ac.uk/sign-up
Contact	info@eme.ac.uk
Website	www.nets.nihr.ac.uk/programmes/eme

Health Services and Delivery Research (HS&DR)

The HS&DR Programme funds research to produce rigorous and relevant evidence on the quality, accessibility and organisation of health services. This includes evaluations of how the NHS might improve delivery of services. The audience for this research is the public, patients, clinicians and managers.

The programme supports a range of types of research including evidence synthesis and primary research. This includes large-scale studies of national importance which address an issue of major strategic importance to the NHS and are likely to lead to changes in practice that will have a significant impact on a large number of patients across the UK. The HS&DR Programme has two workstreams: researcher-led and commissioned.

The researcher-led workstream accepts applications from researchers on any question that is within the programme remit.

The commissioned workstream issues calls on specific topics that have been identified as high priority for the NHS.

[Calls/Competitions](#)
[Application process](#)
[Alerts](#)
[Contacts](#)
[Website](#)

Researcher-led and commissioned calls
Two-stage
www.nets.nihr.ac.uk/sign-up
hsdrinfo@southampton.ac.uk
www.nets.nihr.ac.uk/programmes/hsdr



Health Technology Assessment (HTA)

The HTA Programme funds research about the clinical and cost effectiveness and broader impact of healthcare treatments and tests for those who plan, provide or receive care in the NHS. HTA research is undertaken where some evidence already exists to show that a technology can be effective and this needs to be compared to the current standard NHS intervention to see which works best.

The term ‘health technology’ can cover any intervention used in the treatment, prevention or diagnosis of disease. This could mean research evaluating for example, devices, procedures, drugs, settings of care or screening, provided the study outcomes lead to findings that have the potential to be of direct benefit to NHS patients.

The HTA Programme has two main workstreams: researcher-led and commissioned.

The researcher-led workstream, Clinical Evaluation and Trials (CET), offers researchers the opportunity to submit proposals on topics or research questions within the programme’s remit. There are three cut-off dates a year when applications will be considered.

The commissioned workstream invites applications in response to calls for research on specific questions which have been identified and prioritised for their importance to the NHS and patients. Proposals may include primary research, evidence synthesis, or feasibility and pilot studies.

[Calls/Competitions](#)
[Application process](#)

[Alerts](#)
[Contacts](#)
[Website](#)

Researcher-led and commissioned calls
Primary research – two-stage*
Evidence synthesis – one-stage*
www.nets.nihr.ac.uk/sign-up
hta@hta.ac.uk
www.nets.nihr.ac.uk/programmes/hta

*Flexible depending on the type of call

Invention for Innovation (i4i)

The Invention for Innovation (i4i) Programme is a translational funding scheme that supports the preclinical and clinical development of innovative medical technologies. The aim of i4i is to de-risk early stage projects that have a strong potential for commercialisation and acceptance for use in the NHS, and to make them attractive to follow-on funders and investors.

Awards under the i4i Programme are intended to help bridge the 'valley of death' in early stage medtech innovation, by supporting collaborative research and development from proof of concept stage through to clinical safety and efficacy evaluation of completed prototypes.

The proposed technology or intervention must address an existing or emerging healthcare need and must have a clear pathway towards commercialisation and NHS adoption. The expected output is an advanced or clinically validated prototype medical device, technology or intervention.

The i4i Programme runs two funding streams, Product Development Awards and Challenge Awards. Product Development Awards support research and development of medical devices, active implantable devices and *in vitro* diagnostic devices in any area of existing or emerging clinical need. Challenge Awards address a particular challenge that is a priority for the NHS.

As collaboration is key to the development of innovative healthcare technologies, the i4i Programme requires project teams to comprise at least two organisations from universities, Higher Education Institutions, NHS organisations or industry. The involvement of small and medium enterprises is particularly welcome.

Calls/Competitions	Researcher-led and commissioned calls
Application process	Two-stage
Alerts	www.nihr.ac.uk
Contact	i4i@nihr.ac.uk
Website	www.nihr.ac.uk/i4i

Programme Grants for Applied Research (PGfAR)

Programme Grants for Applied Research provide funding for major programmes of research that are a priority for the NHS.

These awards support work that will deliver findings with practical application, typically through improved healthcare or better healthcare delivery, within three to five years of a programme's end.

The programmes funded are interrelated groups of high quality research projects requiring a multidisciplinary approach, including input from clinical, health economics, statistics, qualitative and behavioural sciences backgrounds to ensure that research objectives can be met.

Calls/competitions	Researcher-led
Application process	Two-stage
Alerts	www.nihr.ac.uk
Contact	programme.grants@nihr.ac.uk
Website	www.nihr.ac.uk/pgfar

Programme Development Grants (PDG)

If aspects of a proposed Programme Grant application need preparatory work, a PDG is available to strengthen the basis for a full Programme Grant application.

Calls/competitions	Researcher-led
Application process	One-stage
Alerts	www.nihr.ac.uk
Contact	programme.grants@nihr.ac.uk
Website	www.nihr.ac.uk/pdg

Public Health Research (PHR)

The PHR Programme funds research that evaluates public health interventions, providing new knowledge on the benefits, costs, acceptability and wider impacts of non-NHS interventions intended to improve the health of the public and reduce inequalities in health.

The scope of the PHR Programme is multidisciplinary and broad, covering a range of public health interventions. Examples include examining whether regeneration programmes improve public health and reduce health inequalities, evaluating employer schemes to encourage walking or cycling to work and assessing interventions that encourage healthy eating among school children.

[Calls/Competitions](#)
[Application process](#)
[Alerts](#)
[Contacts](#)
[Website](#)

Researcher-led and commissioned calls
Two-stage
www.nets.nihr.ac.uk/sign-up
info@phr.ac.uk
www.nets.nihr.ac.uk/programmes/phr



Research for Patient Benefit (RfPB)

The RfPB Programme funds NHS research. The projects funded are for regionally derived applied research in health services and social care. The programme's strong regional element is unique within the NIHR's research programmes. Applicants need to demonstrate the regional benefits of the proposed research although studies with national benefit will also be considered.

Members of the regional panels that assess the applications are drawn from local academic institutions and health organisations. Members of the public and service users from within the region are also appointed to the regional panels.

RfPB does not specify topics for research and encourages proposals for projects covering a wide range of health service issues and challenges. The programme funds a broad range of topics and research methodologies that increase the effectiveness of NHS services, provide value for money and benefit patients. The programme also supports relevant feasibility studies to help reach the next step of a definitive trial.

All researchers in the NHS in England can apply, and joint applications with academic partners are encouraged.

Calls/Competitions	Researcher-led
Application process	Two-stage
Alerts	www.nihr.ac.uk
Contact	rfpb@nihr.ac.uk
Website	www.nihr.ac.uk/rfpb

Systematic Reviews (SR)

The SR Programme consists of a number of initiatives including the Cochrane Review Groups, the UK Cochrane Centre and the Health Technology Assessment Reviews, which provide high-quality research evidence to support decision-making. Systematic reviews identify, evaluate, combine and summarise the findings of all relevant individual studies, to provide decision makers with the best possible information about the effects of tests, treatments and other interventions used in health and social care.

The SR Programme supports the production and updates of systematic reviews both by core infrastructure funding and open competition via two funding streams: the Cochrane Collaborations Programme Grant Scheme and the Cochrane Incentive Awards.

The Cochrane Collaborations Programme Grant Scheme supports high quality systematic reviews that are of direct benefit to users of the NHS in England. This call runs every three years.

The Cochrane Incentive Awards are available to Cochrane Review Groups to facilitate, and possibly accelerate, activity that is already planned or is underway. This call runs annually.

Calls/Competitions	Researcher-led and commissioned calls
Application process	Two-stage
Alerts	www.nets.nihr.ac.uk/sign-up
Contacts	SRPinfo@southampton.ac.uk
Website	www.nets.nihr.ac.uk/programmes/sr

Research funded by the research programmes

The NIHR's research programmes fund research using a wide range of study designs, including (but not only), evidence synthesis, pilot and feasibility studies, randomised controlled trials and both quantitative and qualitative research. Applicants should note that most NIHR programmes fund research that is later rather than earlier in the research pathway and none fund research in animals.

For all programmes, except the Systematic Reviews Programme, the key issue is not the study design but the question. Programmes are open to any rigorous design that addresses a question that is within the remit of the programme. Each programme's remit is described in the preceding pages, and there is more information on the programme websites.

Guidance on the broad research area and stage funded by each NIHR research programme, and whether programmes of research are funded, is provided on page 15 and defined below.

Broad research area

Public health covers research about the evaluation or delivery of interventions intended to improve the health of healthy populations or groups of patients (NB not including research into the causes of health problems).

Health services and organisation covers research that improves patient safety and service organisation.

Clinical evaluation and translation covers evaluations into the efficacy, effectiveness, costs and broader impact of healthcare interventions.

Technology development covers the R&D of any innovative medical technology including medical devices, active implantable devices and *in vitro* diagnostic devices, and their translation into the clinical environment.

Types of evidence

Evidence synthesis is bringing together different kinds of evidence, for instance into a systematic review or an economic model.

Evidence generation is producing new evidence (primary research).

Scale of funding

Projects are individual studies that are funded as a research project.

Programmes are linked studies that are funded together as a programme of research.

Plain English summaries

Applicants for both research programmes and researcher-led career development awards are required to provide a good quality, plain English summary about their research in their application. The NIHR is committed to making sure the research is easy to understand by those who may not be familiar with scientific vocabulary or medical jargon. This summary will be assessed as part of the review process and, if found not to be of a good quality, applicants might be asked to improve it as a condition of funding. Further information is available on NIHR's 'make it clear' web page: www.invo.org.uk/makeitclear.

Types of research funded

Broad research area	Research programme								
	EME	HS&DR	HTA	i4i	PGfAR	PDG	PHR	RfPB	SR
Public health	✓	✓	✓	✓	✓	✓	✓	✓	✓
Health services and organisation	✗	✓	✓	✗	✓	✓	✗	✓	✓
Clinical evaluation and translation	✓	✗	✓	✓	✓	✓	✗	✓	✓
Technology development	✗	✗	✗	✓	✗	✗	✗	✗	✗
Types of evidence									
Evidence synthesis	✗	✓	✓	✗	✓	✓	✓	✓	✓
Evidence generation	✓	✓	✓	✓	✓	✓	✓	✓	✗
Programmes of research	✗	✓	✗	✗	✓	✓	✓	✗	✓

Key:

EME Efficacy and Mechanism Evaluation

HS&DR Health Services and Delivery Research

HTA Health Technology Assessment

i4i Invention for Innovation

PGfAR Programme Grants for Applied Research

PDG Programme Development Grants

PHR Public Health Research

RfPB Research for Patient Benefit

SR Systematic Reviews

Who can apply

Any organisation that considers that it can carry out high-quality clinical, applied health or social care research is likely to be eligible to seek NIHR funding either directly or in association with a partner organisation (see later for personal awards for research training and career development).

Applicants for research programmes are strongly advised to consider establishing partnerships with other relevant sectors or organisations to demonstrate they have the full breadth of expertise to carry out their proposed research.

Applicants should always check individual call specification documents for any specific eligibility requirements. For instance, Programme Grants and the RfPB Programme are open to NHS bodies and other providers of NHS services in England, which might include local authorities or social enterprises; other organisations can join applications for Programme Grants and RfPB as collaborators. Applicants are encouraged to contact the relevant programme if they have questions regarding eligibility.

Calls/Competitions, funding amounts and periods

	Research programme								
	EME	HS&DR	HTA	i4i	PGfAR	PDG	PHR	RfPB	SR
Calls and competitions (number of opportunities to apply per year)									
Researcher-led	3	3	3	2	3	2	3*	3	1*
Commissioned	3	3	3	2	N/A	N/A	3*	N/A	N/A
Themed	Frequency and participating programmes as advertised								
Funding amounts and periods									
Funding limit**	No limit	No limit	No limit	No limit	No limit***	£100k	No limit	£350k†	£400k
Period of funding	No fixed period	No fixed period	No fixed period	Up to 3 years	No fixed period***	0-18 months	No fixed period	Up to 3 years	Up to 3 years

Notes: *Subject to change. **Applicants must fully justify all costs. ***Period and level of funding depends on nature of proposed work, in particular whether a fully powered evaluative study is included - funding above £2.5 million will be unusual. Programmes terminating in feasibility studies will be unlikely to receive more than £500,000. †Feasibility studies are expected to cost less than £250,000 and proposals which will generate results that may be useful for more downstream investigations are expected to cost less than £150,000.

The NIHR provides career development and support with the aims of creating the next generation of researchers and improving the quality of leadership in health and social care research. These aims are achieved through the provision of a comprehensive range of research training and career development programmes, as well as a leadership support programme.

Research training programmes

The awards that make up NIHR's training programmes range from undergraduate level through to opportunities for established investigators and research leaders. Research conducted as part of the award must be relevant to the health service and is expected to produce an outcome that will benefit patients and/or the public within five years of completion.

The training programmes are aimed at a range of professions and designed to suit different working arrangements and career pathways; they can be researcher or institution-led.

A summary of each programme is provided in the next section and further information is available at www.nihr.ac.uk/training-programmes. An RSS feed and the latest funding calls can be found at www.nihr.ac.uk/career-development-opportunities.

Fellowships Programme

The NIHR Fellowships are open to all professions and offer five levels of fellowship. The awards cover the salary costs, research costs and training and development costs of the trainee. The following fellowships are available on an annual basis:

- Doctoral Research Fellowship (PhD) funding
- Post-Doctoral Fellowship (post-doctoral experience < three years)
- Career Development Fellowship (post-doctoral experience < seven/eight years)
- Senior Research Fellowship (independent researchers)
- Transitional Research Fellowship (post-doctoral experience < five years)

[Calls/Competitions](#)
[Application process](#)
[Alerts](#)
[Website](#)

Researcher-led
Shortlist and interview
www.nihr.ac.uk
www.nihr.ac.uk/fellow

Integrated Academic Training Programme

Academic Clinical Fellowships (ACF) and Clinical Lectureships (CL) are open to doctors and dentists. They are specialty training posts which incorporate protected time for research in order to enable pursuit of an academic clinical career. Appointments to these posts are made through selected Academic Programmes that have been allocated to an higher education institute, NHS trust or local education training board partnerships.

In-Practice Fellowships (IPF) offer fully qualified General Practitioners (GPs), General Dental Practitioners (GDPs) and community dentists the opportunity to pursue a Pre-Doctoral level academic qualification and prepare an application for a Doctoral Fellowship.

The Clinician Scientist (CS) award is a Post-Doctoral level award, open to researchers working in medicine and dentistry who are capable of leading research in their discipline. The awards last up to five years and cover salary, research, training and development costs.

Calls/Competitions	Institution-led (ACF/CL) or researcher-led (IPF/CS)
Application process	Apply to institution (ACF/CL) or NIHR (IPF/CS); shortlist and interview
Alerts	www.nihr.ac.uk and IAT partnership websites
Website	www.nihr.ac.uk/iat

Research Methods Programme

The Research Methods Programme supports the development of talented individuals with expertise in research methods, including statistics, clinical trials, health economics, operational research and modelling, through its Research Methods Fellowships and Internships scheme. A new addition to this programme is the Systematic Review Fellowships scheme, which aims to support individuals from any discipline by providing training at an early stage of their career to help address the current shortage of systematic reviewers. Capacity development in research methods is also supported by the NIHR through its funding of Masters Studentships in Health Economics and Medical Statistics.

[Calls/Competitions](#)
[Application process](#)
[Alerts](#)
[Website](#)

Institution-led
Shortlist and interview
www.nihr.ac.uk and institution websites
www.nihr.ac.uk/rm



HEE/NIHR Integrated Clinical Academic (ICA) Programme

The ICA Programme is funded by Health Education England (HEE) and managed by NIHR. The programme provides personal research training awards for registered non-medical healthcare professionals who wish to develop careers that combine clinical research and research leadership with continued clinical practice and clinical development.

The following awards are available on an annual basis:

- Masters in Clinical Research Studentships (apply to the funded institution)
- Clinical Doctoral Research Fellowships (PhD funding)
- Clinical Lectureship (post-doctoral experience < three years)
- Senior Clinical lectureship (substantial post-doctoral experience)

The full list of eligible professions is available from the ICA webpage below.

Calls/Competitions	Institution-led or researcher-led
Application process	Apply to NIHR or institution (Masters), one-stage or shortlist and interview
Alerts	www.nihr.ac.uk and institution websites
Website	www.nihr.ac.uk/hee-ica

Research Professorships

Research Professorships are open to all professions and are appointed through nominations invited from universities in partnership with the NHS or other health service providers. They facilitate strong research leadership at the highest academic level. Outstanding clinical and translational research nominees should have spent no more than five years as a professor, reader, senior lecturer/fellow, clinical scientist or group leader. Each award provides support for salary cost, a post-doctoral appointment, research cost and indirect costs.

Calls/Competitions	Institution-led
Application process	Shortlist and interview
Alerts	www.nihr.ac.uk
Website	www.nihr.ac.uk/rprofs

Knowledge Mobilisation Research Fellowships

The Knowledge Mobilisation Research Fellowship Programme welcomes applications from clinicians and academics alike. The programme supports awardees to apply innovative approaches to the mobilisation of health research derived knowledge, whilst simultaneously researching the processes and impacts of such innovation. Knowledge Mobilisation Research Fellowships are personal awards and fund a fellow's salary costs, a personalised training and development programme and an appropriate knowledge mobilisation research project.

Calls/Competitions	Researcher-led
Application process	Shortlist and interview
Alerts	www.nihr.ac.uk
Website	www.nihr.ac.uk/kmrf

Clinical Trial Fellowships

The Clinical Trial Fellowships are designed to support existing NIHR Trainees who have the experience and interest in working with clinical trials as part of their current training award, and who would benefit from further training within the setting of an NIHR-supported Clinical Trials Unit (CTU).

Calls/Competitions	Institution-led
Application process	One-stage
Alerts	www.nihr.ac.uk
Website	www.nihr.ac.uk/ctf

School for Primary Care Research Fellowships

The School for Primary Care Research Fellowships trains future research leaders in primary care research to remedy short-supply in areas of particular methodological importance to primary care research, for example statistical expertise and health economics.

Calls/Competitions	Institution-led
Application process	Shortlist and interview
Alerts/website	www.spcr.nihr.ac.uk
Contact	nihrspcr@phc.ox.ac.uk
Website	www.spcr.nihr.ac.uk/trainees

Leadership Support and Development Programme

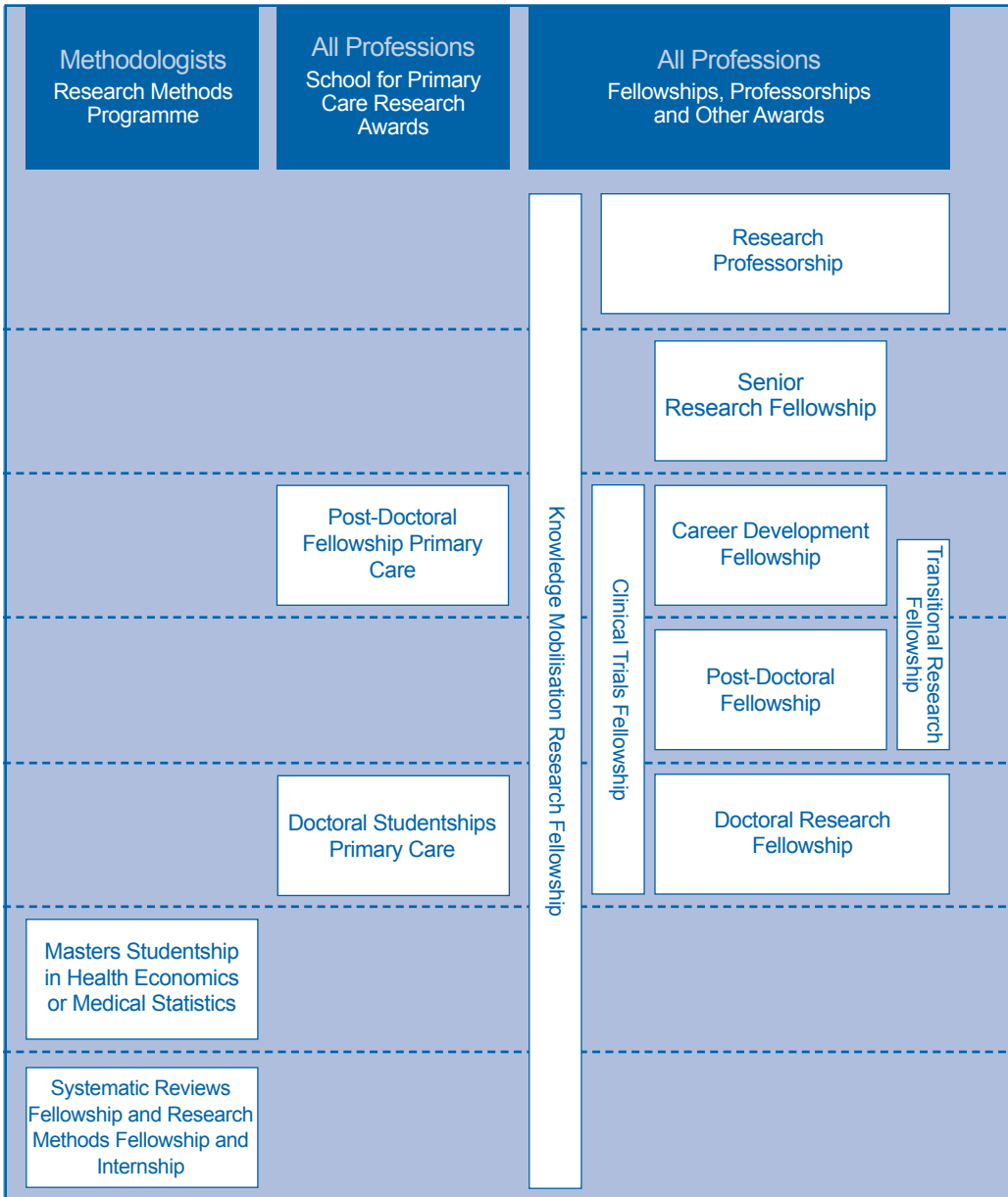
The Leadership Programme is for individuals in the NIHR who are in, or are aspiring to be in, leadership positions. The programme is open to NIHR leaders, advanced trainees, managers and directors.

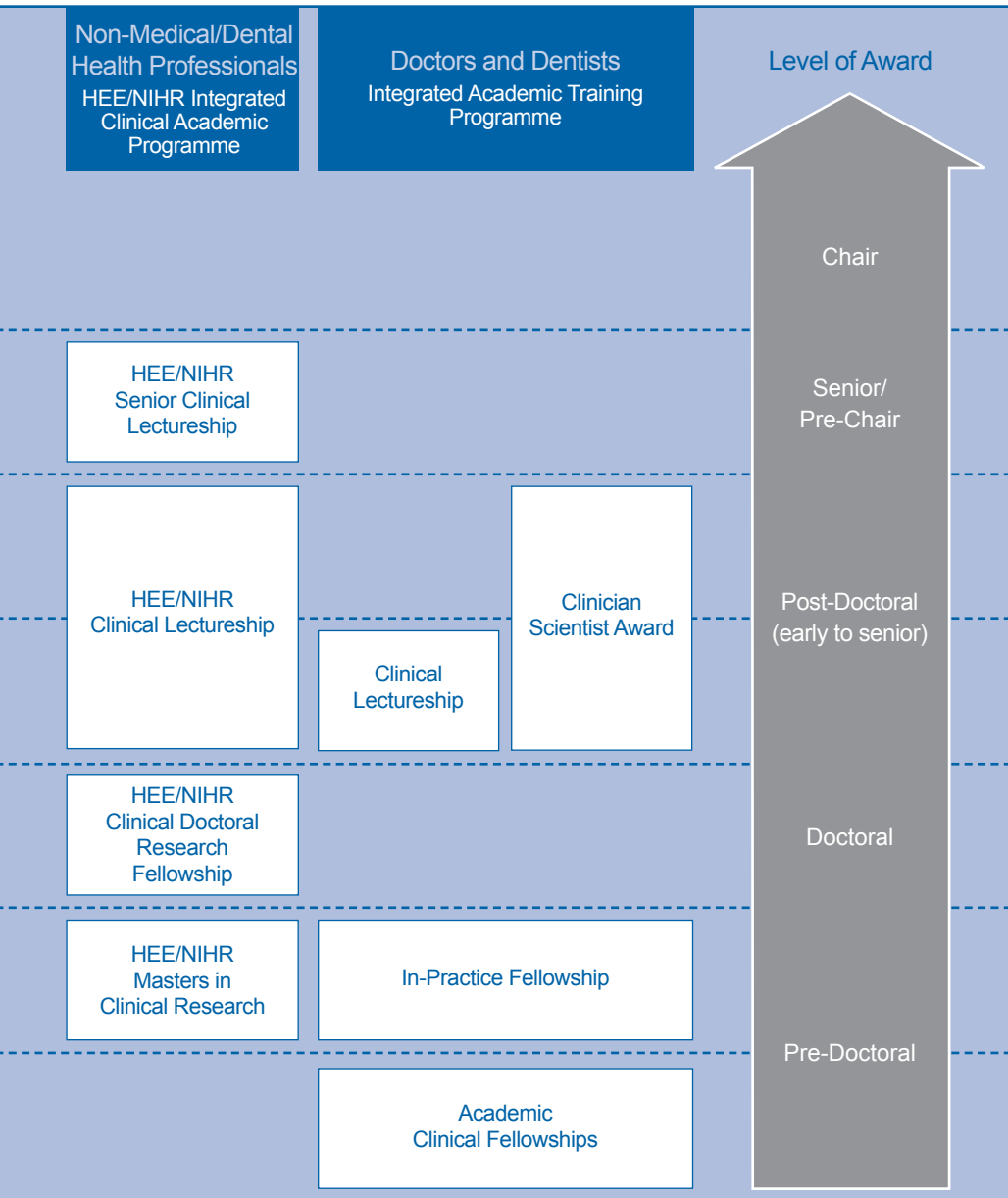
The aim of the Leadership Programme is to improve the quality of leadership in health and social care research. This will ensure that achievement of the NIHR's strategic goals is underpinned by leadership development, as happens in other leading organisations. The programme focuses on leadership development that contributes to research performance and to the strategic priorities of the NIHR.

Calls/Competitions	Individual-led
Alerts/website	www.nihr.ac.uk/leadership



Research career pathway chart





Research Design Service (RDS)

The Research Design Service (RDS) supports research teams to develop and submit high quality applied health and social care grant applications to NIHR and other national peer-reviewed funding programmes.

The RDS offers specialist advice on all aspects of an application including:

- designing a research study
- research methods (qualitative and quantitative)
- identifying suitable sources of funding
- involving patients and public in research design
- identifying potential academic, clinical and lay collaborators.

Advice is confidential and free of charge.

National website: www.rds.nihr.ac.uk

RDS East of England

Email rds.eoe@nihr.ac.uk
Tel 01206 874856

RDS South Central

Email rds.sc@nihr.ac.uk
Tel 023 8120 4778

RDS East Midlands

Email rds.em@nihr.ac.uk
Tel 0116 252 3276
Tel 0115 970 9310

RDS South East

Email rds.se@nihr.ac.uk
Tel 0127 364 3952

RDS London

Email rds.london@nihr.ac.uk
Tel 020 7848 6782

RDS South West

Email rds.sw@nihr.ac.uk
Tel 0182 334 2792

RDS North East

Email rds.ne@nihr.ac.uk
Tel 0191 208 7647

RDS West Midlands

Email rds.wm@nihr.ac.uk
Tel 0121 414 8533

RDS North West

Email rds.nw@nihr.ac.uk
Tel 0152 459 3209

RDS Yorkshire and the Humber

Email rds.yh@nihr.ac.uk
Tel 0114 222 0828

Patient and public involvement

The NIHR is committed to active patient and public involvement to enhance the quality, relevance and acceptability of the research it funds. All research applicants are asked to describe how they have involved patients and the public in developing their research proposal, as well as plans for involvement in the research study. Through the INVOLVE Programme, the NIHR offers information, guidance and online resources on patient and public involvement in research and the difference it can make.

Email admin@invo.org.uk
Telephone 023 8065 1088
Website www.involve.nihr.ac.uk

Journals Library

The NIHR is the world's first health research funder to publish comprehensive accounts of its commissioned research within its own peer-reviewed collection of journals. Total and complete publication of research findings is part of the NIHR's commitment to Open Access and adding value to all stages of research.

Website www.journalslibrary.nihr.ac.uk

Dissemination Centre

The Dissemination Centre supports NHS decision-making by producing:

- **Signals** - short, accessible summaries of the latest research which have been identified as particularly important to clinicians, patients and managers
- **Highlights** - compact digests of research evidence addressing significant health service issues
- **Themed Reviews** - summaries of the state of the evidence on key health and social care issues, developed with a steering group of professional, patient and carer experts.

Website www.dc.nihr.ac.uk

Contacts

National Institute for Health Research

Email enquiries@nihr.ac.uk

Website www.nihr.ac.uk

Coordinating Centres

Central Commissioning Facility

Email ccf@nihr.ac.uk

Telephone 020 8843 8000

Website www.nihr.ac.uk/ccf

Evaluation, Trials and Studies Coordinating Centre

Email netscomms@southampton.ac.uk

Telephone 023 8059 5586

Website www.nets.nihr.ac.uk

Trainees Coordinating Centre

Email tcc@nihr.ac.uk

Telephone 0113 346 6260

Website www.nihr.ac.uk/tcc

The information in this leaflet is correct at the time of printing.
September 2015.



Follow us on Twitter @OfficialNIHR

